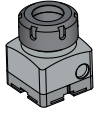








PRODUCT DESCRIPTION

- » Original reference elements
- » Prepared for chip encoding



	Content	Pcs.	No.	EUR
	HER 1232/ER32	1	HER 1232/ER32/SET	< >
	HER 1910/ 1	1		
	Ø 3	1		
	Ø 4	1		
	Ø 5	1		
	Ø 6	1		
	Ø 7	1		
	Ø 8	1		
	Ø 9	1		
	Ø 10	1		
	Ø 11	1		
	Ø 12	1		
	Ø 13	1		
	Ø 14	1		
	Ø 15	1		
	Ø 16	1		
Ø 17	1			
Ø 18	1			
Ø 19	1			
Ø 20	1			
	Wrench ER32	1		
	HER 1839/ER32	1		

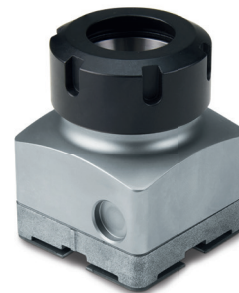
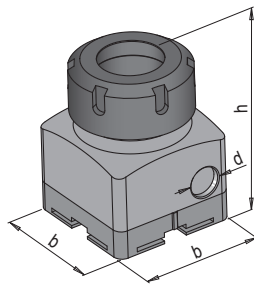


PRODUCT DESCRIPTION

- » Prepared for chip encoding
- » Original reference elements

MATERIAL

- » 1.2083, hardened



b	h	d	No.	EUR
54	70.5	13	HER 1232/ER32	< >