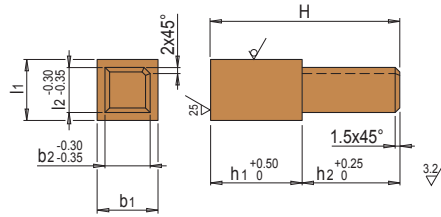


PRODUKTBESCHREIBUNG

» Vierkant im Spannbereich winklig gefräst und allseitig gefast

MATERIAL

» 2.0060 (E-Cu 57)



h2	H	b2/l2	b1	l1	h1	 Stk. / VPE	Nr.	EUR
32	62	15	15	15	30	12	V 91571/15/15 15/30/Set-12	<>
32	62	15	15	15	30	50	V 91571/15/15 15/30/Set-50	<>
32	75	15	15	15	43	12	V 91571/15/15 15/43/Set-12	<>
32	75	15	15	15	43	50	V 91571/15/15 15/43/Set-50	<>
32	82	15	15	15	50	12	V 91571/15/15 15/50/Set-12	<>
32	82	15	15	15	50	50	V 91571/15/15 15/50/Set-50	<>
40	72	25	25	25	32	12	V 91571/25/25 25/32/Set-12	<>
40	72	25	25	25	32	25	V 91571/25/25 25/32/Set-25	<>
40	80	25	25	25	40	12	V 91571/25/25 25/40/Set-12	<>
40	80	25	25	25	40	25	V 91571/25/25 25/40/Set-25	<>
40	102	25	25	25	62	12	V 91571/25/25 25/62/Set-12	<>
40	102	25	25	25	62	25	V 91571/25/25 25/62/Set-25	<>

KOPFELEKTRODE VIERKANT GEFRÄST, KUPFER

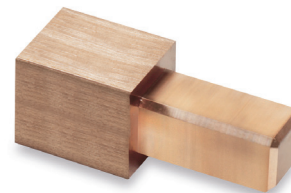
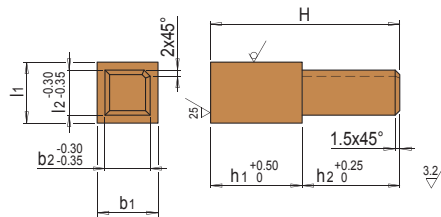
V 91571

PRODUKTBESCHREIBUNG

» Vierkant im Spannbereich winklig gefräst und allseitig gefast

MATERIAL

» 2.0060 (E-Cu 57)



h2	H	b2/l2	b1	l1	h1	Nr.	EUR
32	62	15	15	15	30	V 91571/15/15 15/30	<>
32	75	15	15	15	43	V 91571/15/15 15/43	<>
32	82	15	15	15	50	V 91571/15/15 15/50	<>
32	62	15	20	20	30	V 91571/15/20 20/30	<>
32	82	15	20	20	50	V 91571/15/20 20/50	<>
32	62	15	25	25	30	V 91571/15/25 25/30	<>
32	82	15	25	25	50	V 91571/15/25 25/50	<>
32	62	15	30	30	30	V 91571/15/30 30/30	<>
32	82	15	30	30	50	V 91571/15/30 30/50	<>
32	62	15	35	35	30	V 91571/15/35 35/30	<>
32	82	15	35	35	50	V 91571/15/35 35/50	<>
32	62	15	40	40	30	V 91571/15/40 40/30	<>
32	82	15	40	40	50	V 91571/15/40 40/50	<>

h2	H	b2/l2	b1	l1	h1	Nr.	EUR
40	72	25	25	25	32	V 91571/25/25 25/32	<>
40	80	25	25	25	40	V 91571/25/25 25/40	<>
40	102	25	25	25	62	V 91571/25/25 25/62	<>
40	72	25	30	30	32	V 91571/25/30 30/32	<>
40	92	25	30	30	52	V 91571/25/30 30/52	<>
40	72	25	35	35	32	V 91571/25/35 35/32	<>
40	92	25	35	35	52	V 91571/25/35 35/52	<>
40	72	25	40	40	32	V 91571/25/40 40/32	<>
40	92	25	40	40	52	V 91571/25/40 40/52	<>
40	92	25	50	50	52	V 91571/25/50 50/52	<>