



PRODUCT DESCRIPTION

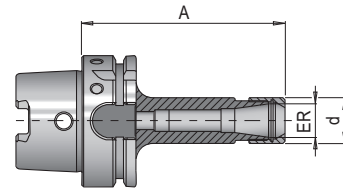
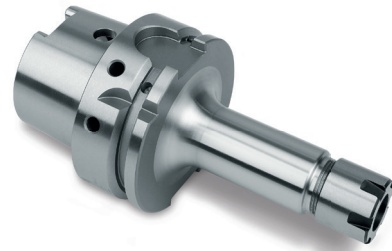
- » Optimal running smoothness due to hard turned shanks
- » Hard reworked puller grooves, HSK shoulder and HSK ejection surface
- » With length adjustment thread (without adjusting screw)
- » With Balluff chip hole

APPLICATION

- » For clamping tools with cylindrical shank in ER collets

INCLUDED IN THE DELIVERY

- » Includes clamping nut



d	Clamping range	Interface	ER	A	No.	#CU#
16	1-7	HSK-A 63	11	100	HWZ 1120/HSK-A 63/11/100	XX,YY
22	1-10	HSK-A 63	16	100	HWZ 1120/HSK-A 63/16/100	XX,YY