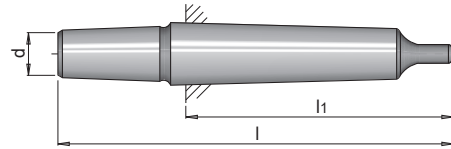
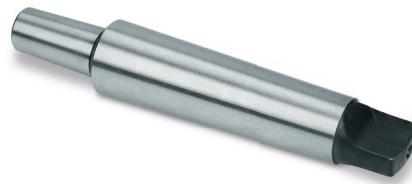


PRODUCT DESCRIPTION

- » Suited for drill chuck taper
- » 100% hardened and ground



d	l	l1	MK ¹⁾	Holding fixture	No.	EUR
14.5	97	62	MK 1	B 16	HWZ 9300/MK1/B16	< >
14.5	110.5	75	MK 2	B 16	HWZ 9300/MK2/B16	< >
14.5	134	94	MK 3	B 16	HWZ 9300/MK3/B16	< >

1) MK: Morse taper