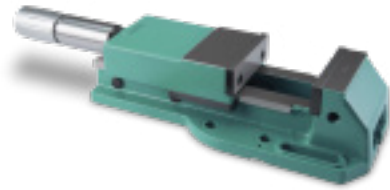
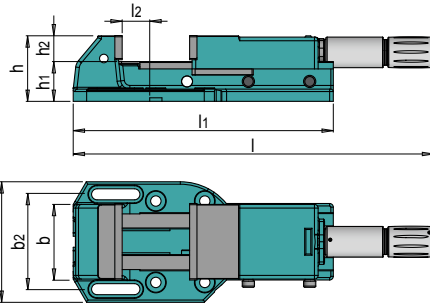


### PRODUCT DESCRIPTION

- » Version R with regulator for presetting the clamping force
- » 100% utilisation of the clamping force through centrally positioned spindle with mechanical high-pressure amplifier
- » High stability through monoblock body from GGG-70 ductile cast iron
- » Highest precision through hardened and ground slides
- » Accuracy of 0.01 mm in clamping repeatability



### INCLUDED IN THE DELIVERY

- » HWS 5602 Clamping jaws (2 pcs.)
- » HWS 5670 Handle

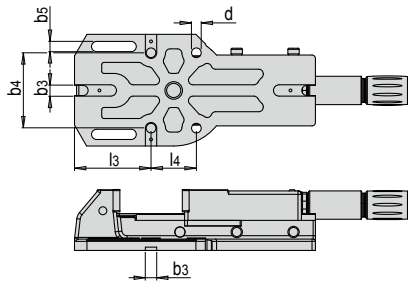
R <sup>1)</sup>	Wt.	b1	b2	h	h1	h2	l	l1	l2	SK <sup>2)</sup>	b	No.	EUR
No	26 kg	197	155	107.5	65	42.5	480-690	425	45	40 kN	125	HWS 500/125	<>
Yes	26 kg	197	155	107.5	65	42.5	507-718	425	45	40 kN	125	HWS 500R/125	<>
No	51 kg	252	200	130.5	80	50.5	570-875	570	85	50 kN	160	HWS 500/160	<>
Yes	51 kg	252	200	130.5	80	50.5	594-902	570	85	50 kN	160	HWS 500R/160	<>

1) R: Regulator for presetting the clamping force

2) SK: clamping force [kN]

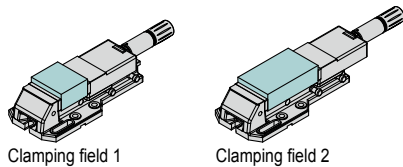
### INSTALLATION EXAMPLE FOR HWS 500 / HWS 500R

- » Mounting with screw hole



No.	b	b3	b4	b5	d	l3	l4
HWS 500/125	125	20	133	18	17	135	80
HWS 500R/125	125	20	133	18	17	135	80
HWS 500/160	160	20	167	18	17	185	110
HWS 500R/160	160	20	167	18	17	185	110

- » Clamping possibilities



SF 1 <sup>1)</sup>	SF 2 <sup>1)</sup>
0-150	100-205
0-150	100-205
0-155	150-305
0-155	150-305

1) Clamping field