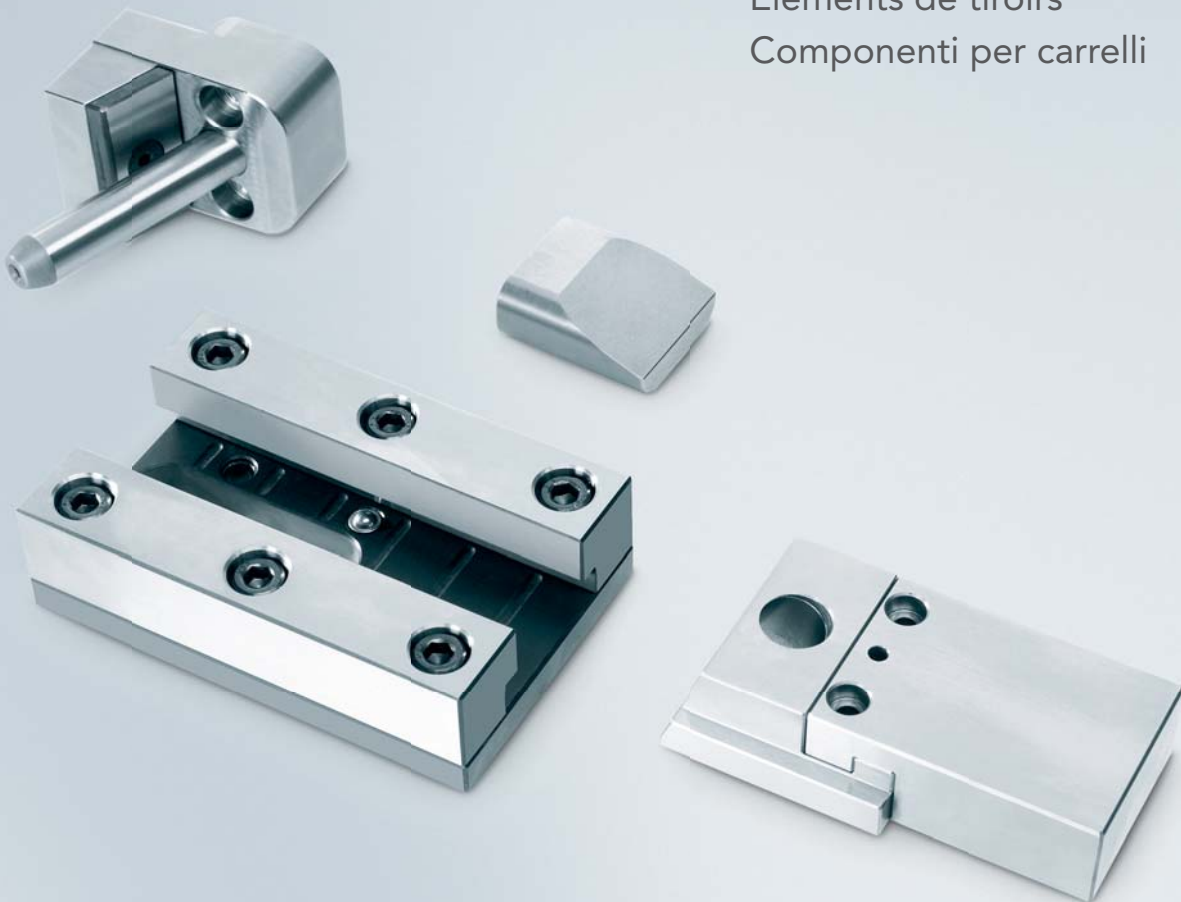




Schieber- elemente



Slide elements
Elements de tiroirs
Componenti per carrelli



meusburger[®]

EUR 2008

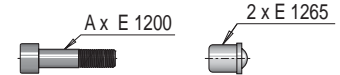
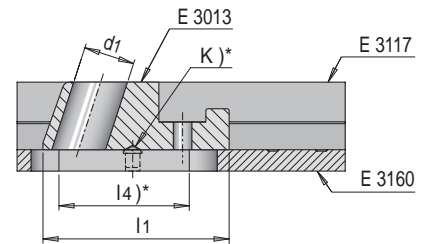
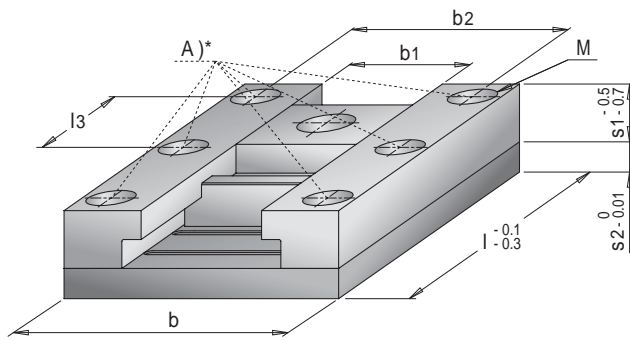
E 3012

Schieberbaukasten

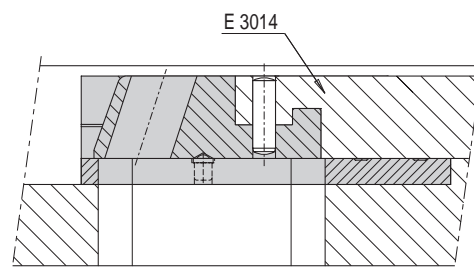
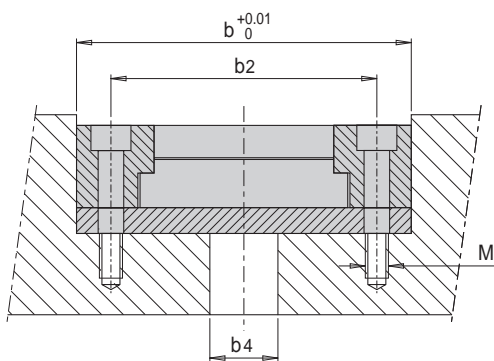
slides construction kit

kit ensemble tiroir

kit costruzione carrello



A	b	d1	l1	b2	M	s2	l3	b4	l4	s1	b1	l	Nr./No.	EUR/1
4	52	11	40	40	M 5	8	34	12	16	12	20	50	E 3012/12/ 20/ 50	289,00
4							47		22			63	E 3012/12/ 20/ 63	299,00
6							32		28			80	E 3012/12/ 20/ 80	312,00
4	57	11	40	45	M 5	8	34	12	16	12	25	50	E 3012/12/ 25/ 50	297,00
4							47		22			63	E 3012/12/ 25/ 63	307,00
6							32		28			80	E 3012/12/ 25/ 80	327,00
4	64	11	40	52	M 5	8	34	12	16	12	32	50	E 3012/12/ 32/ 50	309,00
4							47		22			63	E 3012/12/ 32/ 63	319,00
6							32		28			80	E 3012/12/ 32/ 80	333,00
4	52	11	42	40	M 5	8	34	12	16	16	20	50	E 3012/16/ 20/ 50	302,00
4							47		22			63	E 3012/16/ 20/ 63	312,00
6							32		28			80	E 3012/16/ 20/ 80	325,00
4	57	11	42	45	M 5	8	34	12	16	16	25	50	E 3012/16/ 25/ 50	311,00
4							47		22			63	E 3012/16/ 25/ 63	321,00
6							32		28			80	E 3012/16/ 25/ 80	341,00
4	64	11	42	52	M 5	8	34	12	16	16	32	50	E 3012/16/ 32/ 50	322,00
4							47		22			63	E 3012/16/ 32/ 63	332,00
6							32		28			80	E 3012/16/ 32/ 80	346,00
4	65	13	46	47	M 6	8	43	14	20	20	25	63	E 3012/20/ 25/ 63	338,00
4							60		28			80	E 3012/20/ 25/ 80	349,00
6							40		38			100	E 3012/20/ 25/100	364,00
4	72	13	46	54	M 6	8	43	14	20	20	32	63	E 3012/20/ 32/ 63	353,00
4							60		28			80	E 3012/20/ 32/ 80	365,00
6							40		38			100	E 3012/20/ 32/100	380,00
4	80	13	46	62	M 6	8	43	14	20	20	40	63	E 3012/20/ 40/ 63	375,00
4							60		28			80	E 3012/20/ 40/ 80	387,00
6							40		38			100	E 3012/20/ 40/100	403,00
4	65	13	52	47	M 6	8	60	14	28	25	25	80	E 3012/25/ 25/ 80	362,00
6							40		38			100	E 3012/25/ 25/100	376,00
4							72		28			80	E 3012/25/ 32/ 80	377,00
6	40	38	100	E 3012/25/ 32/100	392,00									
4	80	13	52	62	M 6	8	60	14	28	25	40	80	E 3012/25/ 40/ 80	402,00
6							40		38			100	E 3012/25/ 40/100	417,00
4							82		28			80	E 3012/25/ 32/100	452,00
6	40	38	100	E 3012/25/ 40/100	471,00									
4	82	15	60	60	M 8	10	76	16	38	32	32	100	E 3012/32/ 32/100	452,00
6							50.5		28			80	E 3012/32/ 32/125	474,00
4							90		28			80	E 3012/32/ 40/100	466,00
6	50.5	28	80	E 3012/32/ 40/125	489,00									
4	100	15	60	78	M 8	10	76	16	38	32	50	100	E 3012/32/ 50/100	484,00
6							50.5		28			80	E 3012/32/ 50/125	507,00
4							100		28			80	E 3012/32/ 50/125	507,00



A)* Anzahl Schraubenbohrungen

K)* Nut für Druckstück kundenseitig fertigen

l4)* maximaler Hub

A)* nombre de trous de fixation

K)* usinage des rainures pour les butées par le client

l4)* course maximale

A)* number of screwholes

K)* slot for thrust pieces to be machined

l4)* maximum travel

A)* numero di fori di fissaggio

K)* fresare la scanalatura per gli arresti, lavorazione dal cliente

l4)* corsa massimale

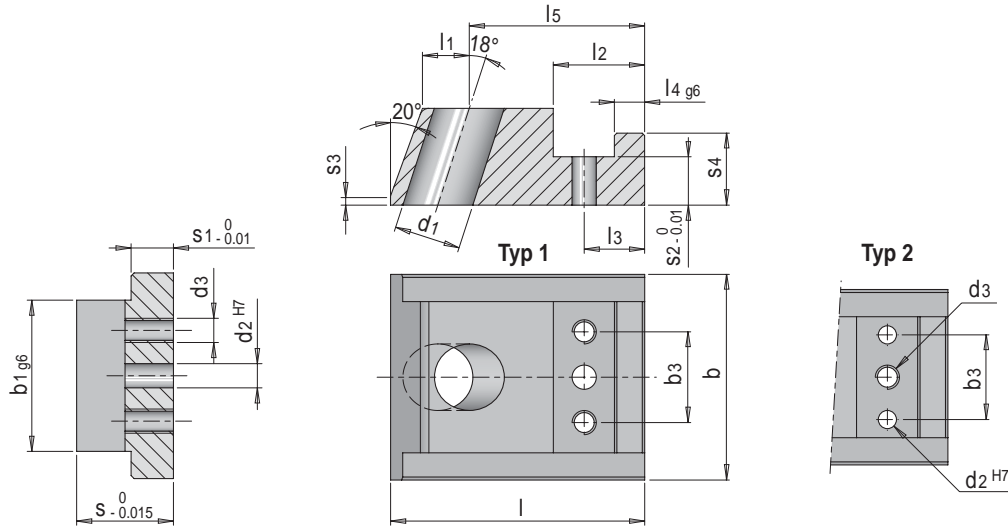
E 3013

Schieber

slide

tiroir

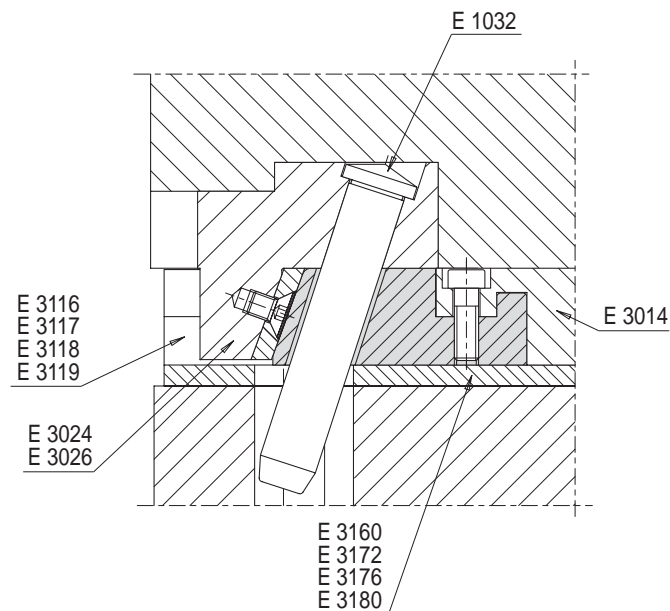
carrello



Mat.: 2343

≈ 54 HRC

Typ	b	l	d1	l1	s1	d2	l2	s2	b3	d3	l3	s3	l4	s4	l5	s	b1	Nr./No.	EUR/1
2	27	40	11	7.75	6	3	15.1	6	14	M 4	10	1.5	5	8.9	28.44	12	20	E 3013/12/20	127,00
1	32					4			15								25	E 3013/12/25	131,00
	39								20								32	E 3013/12/32	138,00
	29	42	11	7.75	8	3	15.1	8	14	M 4	10	1.5	5	11.9	28.98	16	20	E 3013/16/20	135,00
1	34					4			15								25	E 3013/16/25	140,00
	41								20								32	E 3013/16/32	146,00
	34	46	13	9.75	8	4	18.1	9	15	M 4	13	2	8	13.9	29.71	20	25	E 3013/20/25	146,00
1	41								20								32	E 3013/20/32	154,00
	49								25								40	E 3013/20/40	162,00
	34	52	13	9.75	8	4	22.1	10	15	M 4	16	2	10	15.9	33.89	25	25	E 3013/25/25	152,00
1	41								20	M 5							32	E 3013/25/32	160,00
	49								25								40	E 3013/25/40	170,00
	43	60	15	11.6	10	6	26.1	12	20	M 5	19	2	12	19.9	37.47	32	32	E 3013/32/32	172,00
1	51								25								40	E 3013/32/40	180,00
	61								30								50	E 3013/32/50	190,00



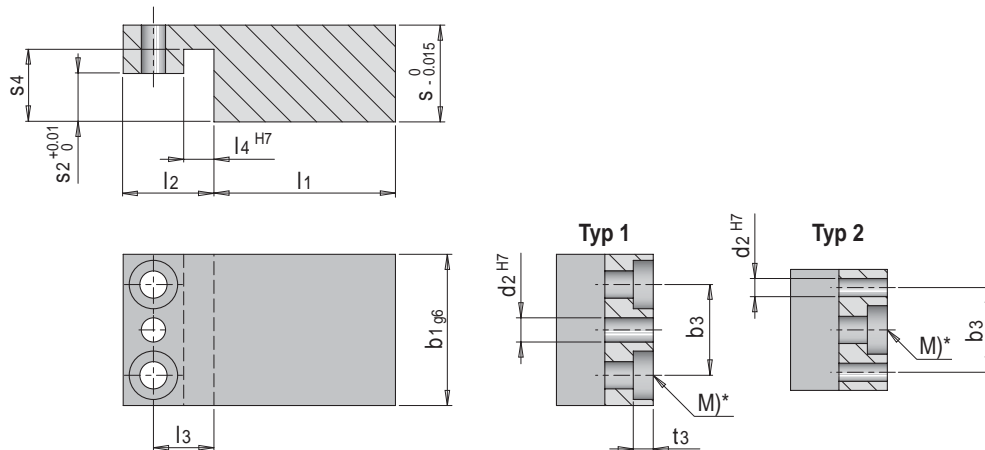
E 3014

Kerneinsatz für Schieber

core for slide

insert-noyau pour tiroir

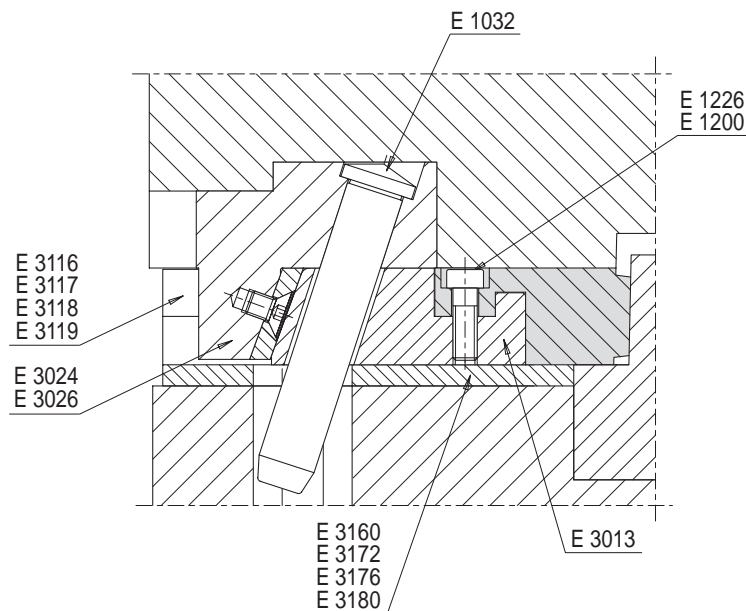
inserto per carrello



Mat.: 2343

≈ 54 HRC

Typ	l ₁	d ₂	l ₂	s ₂	b ₃	M	l ₃	t ₃	l ₄	s ₄	s	b ₁	Nr./No.	EUR/1
2	30	3	15	6	14	M 4	10	3.3	5	9	12	20	E 3014/12/20	71,00
1		4			15							25	E 3014/12/25	77,00
					20							32	E 3014/12/32	84,00
2	30	3	15	8	14	M 4	10	3.3	5	12	16	20	E 3014/16/20	77,00
1		4			15							25	E 3014/16/25	82,00
					20							32	E 3014/16/32	86,00
1	40	4	18	9	15	M 4	13	4.5	8	14	20	25	E 3014/20/25	88,00
					20							32	E 3014/20/32	92,00
					25							40	E 3014/20/40	96,00
1	40	4	22	10	15	M 4	16	4.5	10	16	25	25	E 3014/25/25	92,00
					20			6				32	E 3014/25/32	96,00
					25	40		E 3014/25/40				99,00		
1	50	6	26	12	20	M 5	19	6	12	20	32	32	E 3014/32/32	105,00
					25							40	E 3014/32/40	114,00
					30							50	E 3014/32/50	124,00



M)* s = 12, 16: Schraubenbohrung für E 1226
s = 20, 25, 32: Schraubenbohrung für E 1200

M)* s = 12, 16: screw hole for E 1226
s = 20, 25, 32: screw hole for E 1200

M)* s = 12, 16: passage de vis pour E 1226
s = 20, 25, 32: passage de vis pour E 1200

M)* s = 12, 16: foro per vite E 1226
s = 20, 25, 32: foro per vite E 1200

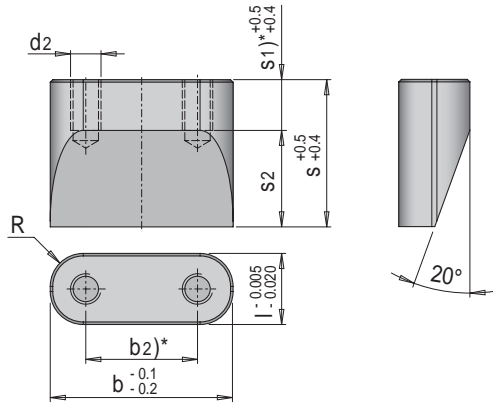
E 3022

Druckkeil

cotter

coin de fermeture

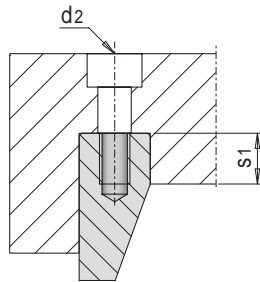
tassello di chiusura



Mat.: 2343

≈ 54 HRC

R	l	s	s1	d2	b2)*	s2	b	Nr./No.	EUR/1
4.5	10	17	6	M 5	-	11	20	E 3022/11/20	41,80
					15		25	E 3022/11/25	46,20
4.5	12	23	8	M 6	-	15	20	E 3022/15/20	47,30
					20		32	E 3022/15/32	53,90
6.5	14	29	10	M 6	-	19	25	E 3022/19/25	50,60
					22		36	E 3022/19/36	58,30
6.5	16	36	12	M 8	-	24	32	E 3022/24/32	59,40
					30		46	E 3022/24/46	66,00
8.5	20	47	16	M 8	-	31	36	E 3022/31/36	68,20
					30		50	E 3022/31/50	77,00
10.5	24	59	20	M10	-	39	40	E 3022/39/40	79,20
					32		56	E 3022/39/56	90,20



b2)* " - " eine Bohrung mittig
s1)* mit Zugabe zum Abstimmen

b2)* " - " one screw hole, centered
s1)* with allowance for adjusting

b2)* " - " un passage de vis, centré
s1)* avec surépaisseur pour ajustage

b2)* " - " una foratura, centrata
s1)* con sovrametallo per regolare

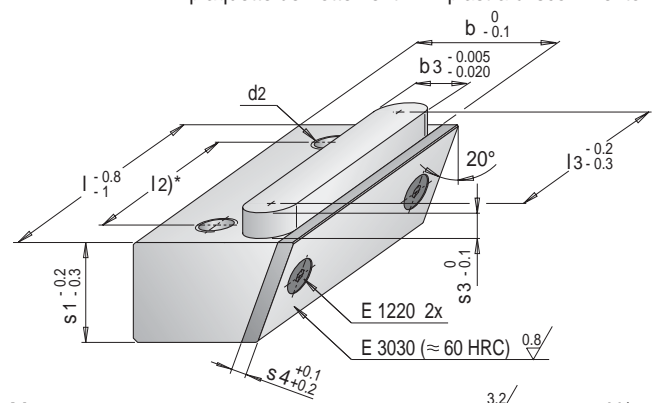
E 3024

Schließkeil mit Druckplatte

cotter with wear plate

coin de verrouillage avec plaque de frottement

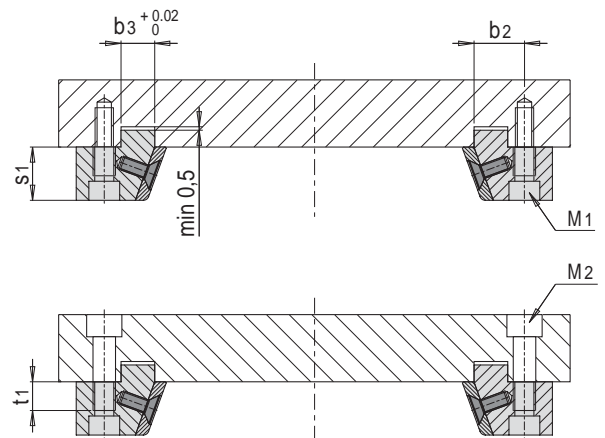
tassello di chiusura con piastra di scorrimento



Mat.: 2312

3.2/ ≈ 1080 N/mm²

b	b3	s3	s4	d2	l2)*	l3	s1	l	Nr./No.	EUR/1	
18	8	5	4	M 6	-	10	11	20	E 3024/11/ 20	48,10	
					-			18	28	E 3024/11/ 28	55,10
					24			30	40	E 3024/11/ 40	63,30
					34			46	56	E 3024/11/ 56	75,90
22	10	6	4	M 8	-	8	15	20	E 3024/15/ 20	49,80	
					-			16	28	E 3024/15/ 28	56,90
					24			28	40	E 3024/15/ 40	65,40
					32			44	56	E 3024/15/ 56	78,90
28	12	6	4	M 8	-	10	19	24	E 3024/19/ 24	55,30	
					-			22	36	E 3024/19/ 36	66,50
					32			36	50	E 3024/19/ 50	77,10
					44			58	72	E 3024/19/ 72	90,10
32	12	6	4	M10	-	10	24	24	E 3024/24/ 24	58,40	
					-			22	36	E 3024/24/ 36	70,40
					30			36	50	E 3024/24/ 50	81,70
					44			58	72	E 3024/24/ 72	97,60
40	16	8	6	M10	-	14	31	32	E 3024/31/ 32	72,70	
					24			28	46	E 3024/31/ 46	88,40
					40			46	64	E 3024/31/ 64	103,50
					52			68	86	E 3024/31/ 86	116,60
50	16	8	6	M12	-	22	39	40	E 3024/39/ 40	91,10	
					32			38	56	E 3024/39/ 56	110,10
					52			62	80	E 3024/39/ 80	133,20
					68			94	112	E 3024/39/112	157,70
63	20	10	6	M16	-	28	49	50	E 3024/49/ 50	117,90	
					40			50	72	E 3024/49/ 72	149,30
					64			78	100	E 3024/49/100	183,90
					84			118	140	E 3024/49/140	211,70



s1	t1	M1	M2	b2
11	6.5	M 4	M 6	13
15	8	M 6	M 8	15
19	12	M 6	M 8	18
24	15	M 8	M10	20
31	17	M 8	M10	24
39	23	M10	M12	26
49	31	M12	M16	32

l2)* " - " eine Bohrung mittig
l2)* " - " un passage de vis, centré

l2)* " - " one screw hole, centered
l2)* " - " una foratura, centrata

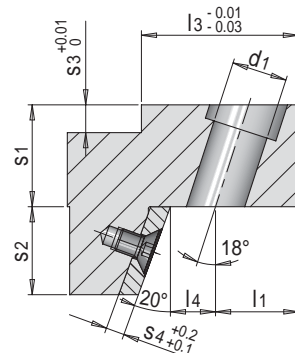
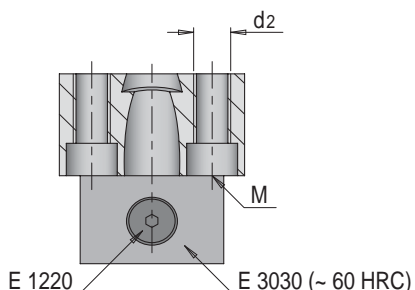
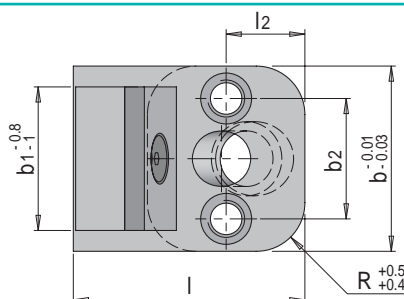
E 3026

Schließkeil mit Schrägbo-
zenaufnahme

cotter with angle pin
retainer

coin de fermeture avec loge-
ment de colonne oblique

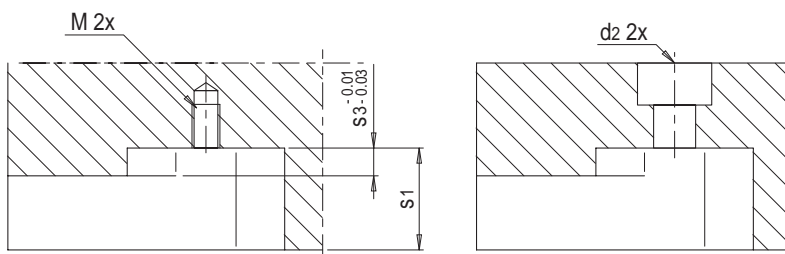
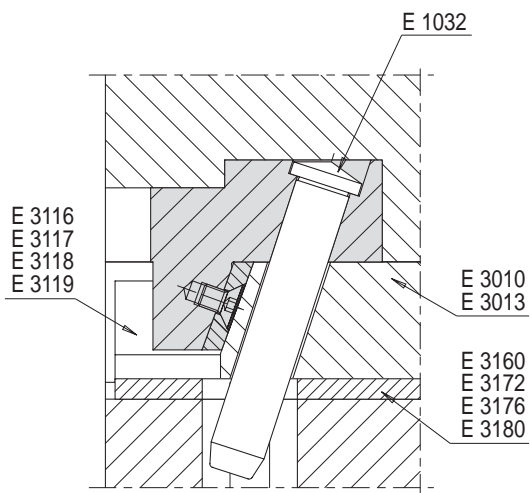
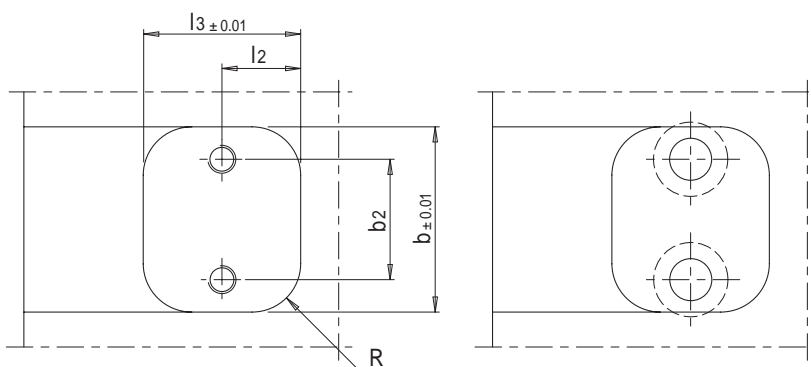
tassello di chiusura con sede
per colonna inclinata



Mat.: 2312

3.2 / ≈ 1080 N/mm²

M	R	b	l	d1	l1	s1	b2	d2	l2	l3	s3	l4	s4	s2	b1	Nr./No.	EUR/1
M5	8	32	38	10	13	16	21	M 6	13	26	6	7.75	4	11	20	E 3026/11/20	100,00
															24	E 3026/11/24	104,50
															32	E 3026/11/32	111,50
M5	8	32	42	10	14	18	21	M 6	13	26	6	7.75	4	15	20	E 3026/15/20	102,30
															24	E 3026/15/24	107,20
															32	E 3026/15/32	113,00
M6	10	40	50	12	18	22	26	M 8	17	34	8	9.75	4	19	24	E 3026/19/24	113,90
															32	E 3026/19/32	121,90
															40	E 3026/19/40	131,30
M6	10	40	54	12	18	24	26	M 8	17	34	8	9.75	4	24	24	E 3026/24/24	122,30
															32	E 3026/24/32	128,60
															40	E 3026/24/40	135,70
M8	10	50	65	14	20	26	32	M10	20	40	8	11.6	6	31	32	E 3026/31/32	142,10
															40	E 3026/31/40	151,90
															50	E 3026/31/50	159,00



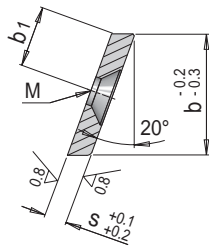
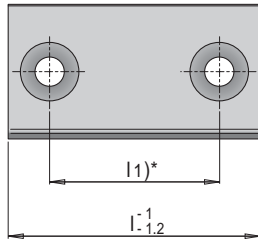
E 3030

Druckplatte für Schließkeil

wear plate for cotter

plaquette de frottement pour coin de verrouillage

piastra di scorrimento per tassello di chiusura



Mat.: 2842



≈ 60 HRC

b ₁	M	s	l ₁ *	b	l	Nr./No.	EUR/1
5	M 4	4	-	11	20	E 3030/11/ 20	15,90
			-		24	E 3030/11/ 24	16,20
			-		28	E 3030/11/ 28	16,40
			-		32	E 3030/11/ 32	16,80
			24		40	E 3030/11/ 40	17,20
7	M 5	4	-	15	20	E 3030/15/ 20	17,90
			-		24	E 3030/15/ 24	18,20
			-		28	E 3030/15/ 28	18,60
			-		32	E 3030/15/ 32	18,90
			24		40	E 3030/15/ 40	19,20
9	M 5	4	-	19	24	E 3030/19/ 24	19,60
			-		32	E 3030/19/ 32	20,00
			-		36	E 3030/19/ 36	20,30
			-		40	E 3030/19/ 40	20,80
			32		50	E 3030/19/ 50	21,50
12	M 5	4	-	24	24	E 3030/24/ 24	21,80
			-		32	E 3030/24/ 32	22,20
			-		36	E 3030/24/ 36	22,60
			-		40	E 3030/24/ 40	23,30
			32		50	E 3030/24/ 50	23,90
15	M 6	6	-	31	32	E 3030/31/ 32	24,40
			-		40	E 3030/31/ 40	25,00
			24		46	E 3030/31/ 46	25,60
			24		50	E 3030/31/ 50	25,90
			40		64	E 3030/31/ 64	26,20
20	M 6	6	-	39	86	E 3030/31/ 86	28,10
			-		40	E 3030/39/ 40	27,40
			36		56	E 3030/39/ 56	28,00
			52		80	E 3030/39/ 80	28,30
			68		112	E 3030/39/112	30,40
25	M 6	6	-	49	50	E 3030/49/ 50	29,60
			40		72	E 3030/49/ 72	30,80
			64		100	E 3030/49/100	33,30
			84		140	E 3030/49/140	35,60

l₁* " - " eine Bohrung mittig

l₁* " - " one screw hole, centered

l₁* " - " un passage de vis, centré

l₁* " - " una foratura, centrata

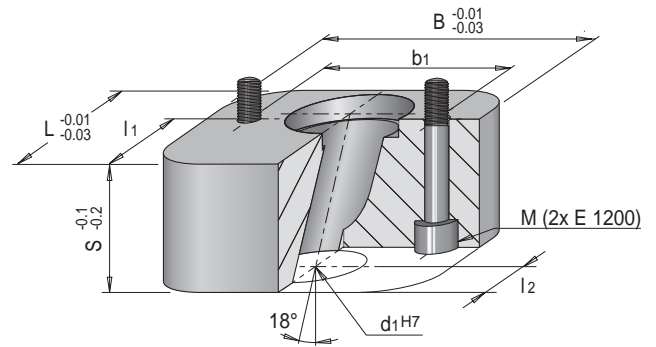
E 3060

Schrägbolzenaufnahme

retainer for inclined pin

logement pour doigt de démoulage

sede per colonna inclinata

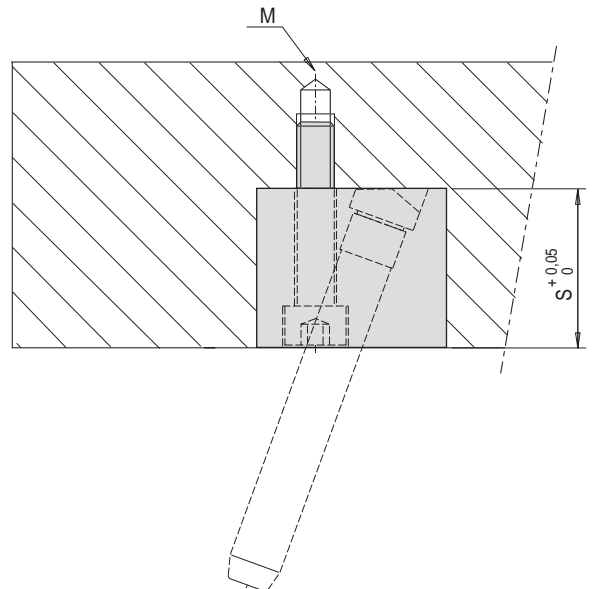
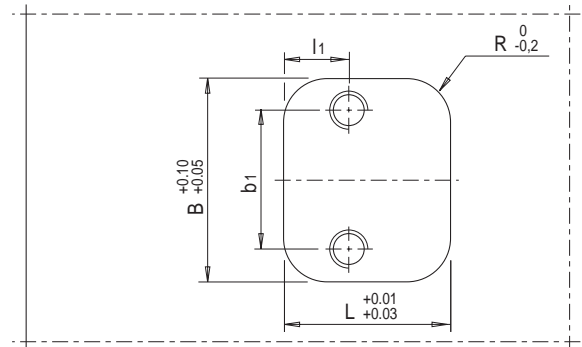


Mat.: 2312



≈ 1080 N/mm²

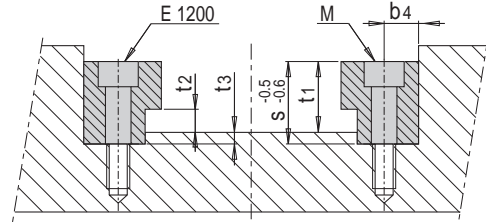
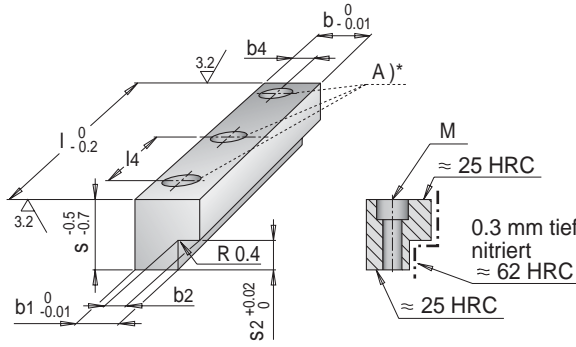
B	L	S	b ₁	l ₁	l ₂	M	R	d ₁	Nr./No.	EUR/1
40	26	18	24	8.5	10	M 6	10	10	E 3060/10	40,30
40	30	24	26	10.0	11	M 6	10	12	E 3060/12	44,10
44	34	28	28	12.0	12	M 6	10	14	E 3060/14	47,20
52	38	32	34	14.0	13	M 8	12	16	E 3060/16	50,40
54	42	36	36	16.0	15	M 8	12	18	E 3060/18	53,20
56	46	40	38	18.0	17	M 8	12	20	E 3060/20	55,90
62	50	44	42	20.0	19	M 8	12	22	E 3060/22	61,40
66	52	46	44	22.0	19	M10	12	24	E 3060/24	67,00
74	62	56	52	24.0	22	M10	16	30	E 3060/30	78,30



E 3117

Führungsleiste einseitig, mit Schraubenbohrungen one-sided guiding rail, with screw holes

rail de guidage unilatéral, avec trous de fixation lardone di guida unidirezionale, con fori di fissaggio



Mat.: 8550



M	A	b4	l4	b	b1	b2	s	s2	l	Nr./No.	EUR/1
M 5	2	6	24	16	12	4	12	6	40	E 3117/12/ 6/ 40	33,80
			34						50	E 3117/12/ 6/ 50	34,80
			47						63	E 3117/12/ 6/ 63	36,50
M 5	3	6	32	16	11	5	16	8	80	E 3117/12/ 6/ 80	38,60
			47						50	E 3117/16/ 8/ 50	37,50
			32						63	E 3117/16/ 8/ 63	39,10
M 5	3	6	42	16	11	5	16	8	80	E 3117/16/ 8/ 80	41,30
			42						100	E 3117/16/ 8/100	43,90
			52.5						125	E 3117/20/ 8/125	49,60
M 6	2	9	43	20	15	5	20	8	63	E 3117/20/ 8/ 63	41,70
			60						80	E 3117/20/ 8/ 80	43,80
			40						100	E 3117/20/ 8/100	46,50
M 6	3	9	43	20	15	5	20	11	63	E 3117/20/ 8/125	49,60
			60						80	E 3117/20/11/ 63	44,10
			52.5						80	E 3117/20/11/ 80	46,30
M 6	2	9	60	20	15	5	25	8	100	E 3117/20/11/100	48,10
			40						125	E 3117/20/11/125	51,30
			52.5						160	E 3117/25/ 8/160	57,10
M 6	3	9	60	20	15	5	25	13	80	E 3117/25/ 8/ 80	47,00
			40						100	E 3117/25/ 8/100	49,60
			52.5						125	E 3117/25/ 8/125	52,80
M 6	3	9	70	20	15	5	25	13	160	E 3117/25/ 8/160	57,10
			40						80	E 3117/25/13/ 80	48,60
			52.5						100	E 3117/25/13/100	52,40
M 8	2	11	76	25	19	6	32	10	125	E 3117/25/13/125	56,70
			50.5						160	E 3117/25/13/160	60,80
			68						100	E 3117/32/10/100	63,30
M 8	3	11	50.5	25	19	6	32	10	125	E 3117/32/10/125	69,00
			68						160	E 3117/32/10/160	74,80
			58						200	E 3117/32/10/200	86,50
M 8	4	11	76	25	19	6	32	16	100	E 3117/32/16/100	65,60
			50.5						125	E 3117/32/16/125	71,50
			68						160	E 3117/32/16/160	77,50
M 8	3	11	50.5	25	19	6	40	10	200	E 3117/32/16/200	89,70
			68						125	E 3117/40/10/125	76,00
			58						160	E 3117/40/10/160	80,70
M 8	4	11	74	25	19	6	40	16	200	E 3117/40/10/200	89,90
			58						250	E 3117/40/10/250	100,40
			74						125	E 3117/40/16/125	78,80
M 8	3	11	50.5	25	19	6	40	16	160	E 3117/40/16/160	83,70
			68						200	E 3117/40/16/200	93,20
			58						250	E 3117/40/16/250	104,20
M10	3	14	64	32	24	8	50	12	160	E 3117/50/12/160	92,60
			84						200	E 3117/50/12/200	102,00
			72						250	E 3117/50/12/250	113,50
M10	4	14	93	32	24	8	50	20	315	E 3117/50/12/315	127,40
			84						160	E 3117/50/20/160	96,00
			72						200	E 3117/50/20/200	105,80
M10	3	14	64	32	24	8	50	20	250	E 3117/50/20/250	117,80
			84						315	E 3117/50/20/315	132,20
			72								
			93								

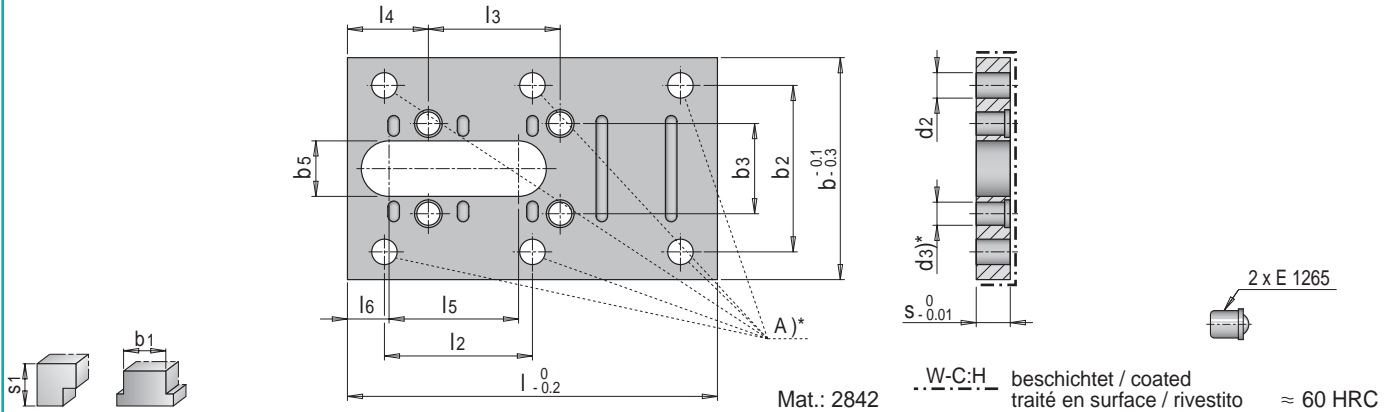
s	s2	M	b4	t1	t2	t3
12	6	M 5	6	10	4	2
16	8	M 5	6	13	5	3
20	8	M 6	9	17	5	3
	11	M 6			8	
25	8	M 6	9	22	5	3
	13	M 6			10	
32	10	M 8	11	28	6	4
	16	M 8			12	
40	10	M 8	11	36	6	4
	16	M 8			12	
50	12	M10	14	46	8	4
	20	M10			16	

A)* Anzahl Bohrungen A)* number of holes
A)* nombre de trous de fixation A)* numero di fori di fissaggio

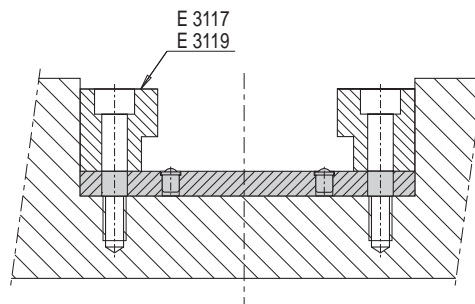
E 3160 Gleitplatte mit Druckstück gliding plate with thrust piece

plaque de frottement avec butées à bille

piastra di scorrimento con appoggio carrello



s1	b1	A	b2	d2	l2	b3	d3	l3	l4	b5	l5	l6	s	b	l	Nr./No.	EUR/1			
12 / 16	20	4	40	5.5	34	20.5	5	13.5	17.5	12	16	9	8	52	50	E 3160/ 52/ 50	92,00			
		4			47			17.5	16.5		22				63	E 3160/ 52/ 63	98,50			
		6			32			28.5	17.5		28				80	E 3160/ 52/ 80	107,40			
		4			34			13.5	17.5		16				57	E 3160/ 57/ 50	95,90			
		4			47			17.5	16.5		22				63	E 3160/ 57/ 63	102,50			
		6			32			28.5	17.5		28				80	E 3160/ 57/ 80	118,10			
	25	45	4		47	43		24	6	15.5	16.5	14		20	10	8	65	63	E 3160/ 65/ 63	107,80
			4			60				29.5	17.5			28				80	E 3160/ 65/ 80	115,20
			6			40				30	20			38				100	E 3160/ 65/100	124,40
			4			43				15.5	16.5			20				72	E 3160/ 72/ 63	115,00
			4			60				29.5	17.5			28				80	E 3160/ 72/ 80	122,70
			6			40				30	20			38				100	E 3160/ 72/100	132,20
20 / 25	25	4	47	6.6	43	24	6	15.5	16.5	14	20	10	8	65	63	E 3160/ 65/ 63	107,80			
		4			60			29.5	17.5		28				80	E 3160/ 65/ 80	115,20			
		6			40			30	20		38				100	E 3160/ 65/100	124,40			
		4			43			15.5	16.5		20				72	E 3160/ 72/ 63	115,00			
		4			60			29.5	17.5		28				80	E 3160/ 72/ 80	122,70			
		6			40			30	20		38				100	E 3160/ 72/100	132,20			
	32	54	4		54	9		43	28	8	15.5	16.5	16	20	13	10	82	63	E 3160/ 80/ 63	129,30
			4					60			29.5	17.5		28				80	E 3160/ 80/ 80	137,30
			6					40			30	20		38				100	E 3160/ 80/100	147,20
			4					43			15.5	16.5		20				80	E 3160/ 80/ 63	129,30
			4					60			29.5	17.5		28				80	E 3160/ 80/ 80	137,30
			6					40			30	20		38				100	E 3160/ 80/100	147,20
32	32	4	60	9	76		30	8	40		20	16	38	13	10	82	100	E 3160/ 82/100	152,60	
		6			50.5				37.5		22.5		125				E 3160/ 82/125	163,30		
		4			76				40		20		28				90	E 3160/ 90/100	158,80	
		6			50.5				37.5		22.5		125				E 3160/ 90/125	169,90		
		4			76				40		20		28				90	E 3160/ 100/100	166,90	
		6			50.5				37.5		22.5		125				E 3160/ 100/125	178,60		
	40	68	4		68	9	76		34	8	40	20	16	38	13	10	90	100	E 3160/ 90/100	158,80
			6				50.5				37.5	22.5		125				E 3160/ 90/125	169,90	
			4				76				40	20		28				90	E 3160/ 100/100	166,90
			6				50.5				37.5	22.5		125				E 3160/ 100/125	178,60	
			4				76				40	20		28				90	E 3160/ 100/100	166,90
			6				50.5				37.5	22.5		125				E 3160/ 100/125	178,60	



A)* Anzahl Bohrungen
 d3)* 4 Bohrungen für E 1265
 A)* nombre de trous de fixation
 d3)* 4 logements pour E 1265

A)* number of holes
 d3)* 4 holes for E 1265
 A)* numero di fori di fissaggio
 d3)* 4 sedi per E 1265

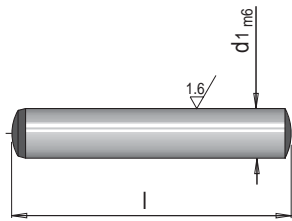
E 1300

Zylinderstift

straight pin

goupille cylindrique

spina cilindrica



DIN 6325

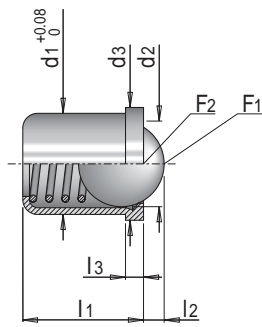
≈ 60 HRC

d1	l	Nr./No.	EUR/1
2	5	E 1300/ 2 x 5	0,10
	6	E 1300/ 2 x 6	0,10
	8	E 1300/ 2 x 8	0,10
	10	E 1300/ 2 x 10	0,10
	12	E 1300/ 2 x 12	0,10
	14	E 1300/ 2 x 14	0,10
	16	E 1300/ 2 x 16	0,10
	18	E 1300/ 2 x 18	0,10
	20	E 1300/ 2 x 20	0,10
	24	E 1300/ 2 x 24	0,10
	28	E 1300/ 2 x 28	0,10
3	6	E 1300/ 3 x 6	0,10
	8	E 1300/ 3 x 8	0,10
	10	E 1300/ 3 x 10	0,10
	12	E 1300/ 3 x 12	0,10
	14	E 1300/ 3 x 14	0,10
	16	E 1300/ 3 x 16	0,10
	18	E 1300/ 3 x 18	0,10
	20	E 1300/ 3 x 20	0,10
	24	E 1300/ 3 x 24	0,10
	28	E 1300/ 3 x 28	0,10
4	8	E 1300/ 4 x 8	0,10
	10	E 1300/ 4 x 10	0,10
	12	E 1300/ 4 x 12	0,10
	14	E 1300/ 4 x 14	0,10
	16	E 1300/ 4 x 16	0,10
	18	E 1300/ 4 x 18	0,10
	20	E 1300/ 4 x 20	0,10
	22	E 1300/ 4 x 22	0,10
	24	E 1300/ 4 x 24	0,10
	28	E 1300/ 4 x 28	0,10
5	12	E 1300/ 5 x 12	0,10
	14	E 1300/ 5 x 14	0,10
	16	E 1300/ 5 x 16	0,10
	18	E 1300/ 5 x 18	0,10
	20	E 1300/ 5 x 20	0,10
	24	E 1300/ 5 x 24	0,20
	28	E 1300/ 5 x 28	0,20
	32	E 1300/ 5 x 32	0,20
	36	E 1300/ 5 x 36	0,20
	40	E 1300/ 5 x 40	0,20
6	12	E 1300/ 6 x 12	0,20
	14	E 1300/ 6 x 14	0,20
	16	E 1300/ 6 x 16	0,20
	18	E 1300/ 6 x 18	0,20
	20	E 1300/ 6 x 20	0,20
	24	E 1300/ 6 x 24	0,20
	28	E 1300/ 6 x 28	0,20
	30	E 1300/ 6 x 30	0,20
	32	E 1300/ 6 x 32	0,20
	36	E 1300/ 6 x 36	0,20
8	20	E 1300/ 8 x 20	0,30
	28	E 1300/ 8 x 28	0,30
	40	E 1300/ 8 x 40	0,40
	50	E 1300/ 8 x 50	0,50
	60	E 1300/ 8 x 60	0,50
10	28	E 1300/10 x 28	0,50
	40	E 1300/10 x 40	0,60
	50	E 1300/10 x 50	0,70
	60	E 1300/10 x 60	0,80
	80	E 1300/10 x 80	1,00
12	28	E 1300/12 x 28	0,70

d1	l	Nr./No.	EUR/1
12	40	E 1300/12 x 40	0,80
	50	E 1300/12 x 50	0,90
	60	E 1300/12 x 60	1,00
	80	E 1300/12 x 80	1,40
	100	E 1300/12 x 100	1,60
16	40	E 1300/16 x 40	1,40
	50	E 1300/16 x 50	1,60
	60	E 1300/16 x 60	1,70
	80	E 1300/16 x 80	2,00
	100	E 1300/16 x 100	2,30
20	50	E 1300/20 x 50	2,10
	60	E 1300/20 x 60	2,30
	80	E 1300/20 x 80	2,60
	100	E 1300/20 x 100	2,90

E 1265 Druckstück gefedert zum Einpressen spring loaded thrust piece to be pressed in

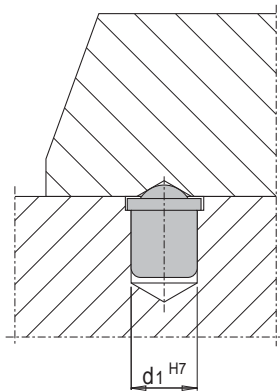
butée à bille à presser appoggio carrello a molla da premere



Mat.: INOX 4305

t max. = 250°C

F ₁ (N)	F ₂ (N)	l ₁	l ₂	d ₂	l ₃	d ₃	d ₁	Nr./No.	EUR/1
2.5	6	5	1	3	0.9	4.6	4	E 1265/ 4	0,80
3	6.5	6	1.4	4	0.9	5.6	5	E 1265/ 5	0,90
5.5	11.5	7	1.8	5	1	6.5	6	E 1265/ 6	1,00
7	12.5	9	2.4	6.5	1.1	8.5	8	E 1265/ 8	1,20



© 2008/1 Meusbürger Georg GmbH & Co KG. Alle Rechte vorbehalten. Kein Teil dieser Unterlagen darf ohne ausdrückliche schriftliche Erlaubnis der Meusbürger Georg GmbH & Co KG für irgendwelche Zwecke vervielfältigt oder übertragen werden. Druckfehler und Irrtümer sowie technische Änderungen vorbehalten.

meusbürger[®]

Meusbürger Georg GmbH & Co KG
Formaufbauten
A-6960 Wolfurt, Kesselstraße 42

T 00 43 (0) 55 74 / 67 06-0
F 00 43 (0) 55 74 / 67 06-11

sales@meusburger.com
www.meusburger.com